

Undergraduate International Students



# A World-Class University With Worldwide Impact

[buffalo.edu/ApplyUB](http://buffalo.edu/ApplyUB)

**UB**  
**University at Buffalo**  
The State University of New York

**No. 1**  
**Public University in New York State**  
(U.S. NEWS & WORLD REPORT RANKING, 2020)

More choices. More challenges. More life-changing experiences. At UB—a top 35 public research university and No. 1 in New York—you'll find 450+ programs, globally renowned faculty and a diverse environment that prepares you for a lifetime of success no matter what path you choose.



**1 hour** by plane to New York City, Boston and Washington, D.C.

**90 minutes** by car to Toronto

**20 minutes** by car to world-famous Niagara Falls



# Undergraduate Degrees

Learn about courses, faculty, special academic opportunities, career options and more: [catalog.buffalo.edu](http://catalog.buffalo.edu)



- \* Concentration
- † Also available as combined 3+3 accelerated bachelor's and law (JD) degrees
- ‡ Specialization track
- § Occupational therapy is a five-year BS/MS combined degree program
- \*\* Pharmacy is a six-year PharmD program
- †† Physical therapy is a six-year advanced degree program; freshmen and transfers should major in exercise science to prepare for this professional physical therapy degree



ALL STUDENTS, FROM THEIR VERY FIRST YEAR, CAN PARTICIPATE IN RESEARCH, SERVICE OR EXPERIENTIAL LEARNING

## UNDERGRADUATE INFORMATION

**University at Buffalo**  
411 Capen Hall  
Buffalo, NY 14260-1604  
USA

**Telephone:** +1 (716) 645-2368  
**Facsimile:** +1 (716) 645-2528  
**Email:** [intiem@buffalo.edu](mailto:intiem@buffalo.edu)  
**Website:** [buffalo.edu/ApplyUB](http://buffalo.edu/ApplyUB)

ACCOUNTING BS, BS/MS  
AFRICAN-AMERICAN STUDIES BA  
AMERICAN STUDIES BA  
ANTHROPOLOGY BA  
ARCHITECTURE BS  
ART BA (STUDIO ART)  
    General Studio\*  
    Graphic Design\*  
    Photography\*  
ART BFA (FINE ARTS)  
    Emerging Practices\*  
    General Studio\*  
    Graphic Design\*  
    Painting\*  
    Photography\*  
    Print Media\*  
    Sculpture\*

ART HISTORY BA  
ASIAN STUDIES BA  
BIOCHEMISTRY BS  
BIOINFORMATICS AND COMPUTATIONAL BIOLOGY BS  
    Biological Sciences\*  
    Biomedical Informatics\*  
    Computer Science and Engineering\*

BIOLOGICAL SCIENCES BA, BA/MS  
BIOMEDICAL SCIENCES, BS, BS/PHARM D  
BIOTECHNOLOGY BS  
BUSINESS ADMINISTRATION BS, BS/MBA  
    Data Analytics\*  
    Financial Analysis\*  
    General Management\*  
    Human Resources Management\*  
    International Business\*  
    Management Information Systems\*  
    Marketing\*  
    Operations and Supply Chain Management\*

BUSINESS ADMINISTRATION/FINANCE BS/MS  
BUSINESS ADMINISTRATION/MANAGEMENT INFORMATION SYSTEMS BS/MS  
CHEMISTRY BA, BS, BA/PHARM D  
CLASSICS BA  
    Ancient Greek Language and Literatures\*  
    Ancient History\*  
    Ancient Latin Language and Literatures\*  
    Classical Civilizations\*  
    Mediterranean Archaeology\*

COMMUNICATION BA  
COMPUTATIONAL PHYSICS BS  
COMPUTER SCIENCE BA, BS, BS/MBA  
COMPUTER SCIENCE/COMPUTER SCIENCE AND ENGINEERING BS/MS  
CRIMINOLOGY BA<sup>†</sup>  
DANCE BA, BFA  
ECONOMICS BA, BA/MA, BA/MS  
ECONOMICS/ECONOMETRICS AND QUANTITATIVE ECONOMICS BA/MS

ENGINEERING:  
    Aerospace BS  
    Biomedical BS, BS/MBA, BS/MS  
    Chemical BS, BS/MBA  
    Civil BS, BS/MBA  
    Computer BS  
    Electrical BS, BS/MBA, BS/MS  
    Environmental BS  
    Industrial BS, BS/MBA  
    Mechanical BS, BS/MBA  
ENGINEERING PHYSICS BS  
ENGLISH BA<sup>†</sup>  
ENVIRONMENTAL DESIGN BA  
ENVIRONMENTAL GEOSCIENCES BS  
    Ecology and the Environment<sup>†</sup>  
    Environmental Monitoring and Analysis<sup>†</sup>  
    Water and the Environment<sup>†</sup>  
ENVIRONMENTAL STUDIES BS  
EXERCISE SCIENCE BS  
    Applied Exercise Physiology\*  
    Health Promotion\*  
    Pre-Health Professions\*

EXERCISE SCIENCE/ATHLETIC TRAINING BS/MS  
EXERCISE SCIENCE/EPIDEMIOLOGY BS/MPH  
EXERCISE SCIENCE/NUTRITION BS/MS  
EXERCISE SCIENCE/PHYSICAL THERAPY BS/DPT  
FILM STUDIES BA  
FRENCH BA



MOST COMPREHENSIVE CAMPUS IN THE STATE UNIVERSITY OF NEW YORK (SUNY) SYSTEM

GEOGRAPHIC INFORMATION SCIENCE BS  
GEOGRAPHY BA  
    Earth Systems Science\*  
    Urban and Regional Analysis\*

GEOLOGICAL SCIENCES BA, BS  
GERMAN BA  
    German Language and Linguistics\*

GLOBAL GENDER STUDIES BA  
    Cultures and Identities\*  
    Gender and Public Policy\*  
    Women and Global Citizenship\*

HISTORY BA<sup>†</sup>  
INFORMATION TECHNOLOGY AND MANAGEMENT BS  
INTERNATIONAL TRADE BA  
ITALIAN BA  
JEWISH STUDIES BA  
LAW BA<sup>†</sup>  
LINGUISTICS BA  
    Applied Linguistics\*  
    Chinese Language and Linguistics\*  
    Japanese Language and Linguistics\*  
    Korean Language and Linguistics\*  
    Language and Cognition\*  
    Language, Society and Communication\*

MATHEMATICAL PHYSICS BS  
MATHEMATICS BA  
    Computing and Applied Mathematics\*  
    General Curriculum\*  
    General Study in Applied Mathematics\*  
    General Study in Mathematics\*  
    General Study in Mathematics and Education\*

MATHEMATICS BS  
    Actuarial Science\*  
    General Study in Applied Mathematics\*  
    General Study in Mathematics\*

MATHEMATICS-ECONOMICS BA  
MEDIA STUDY BA  
    Critical Studies\*  
    Production\*

MEDICAL TECHNOLOGY BS  
MEDICINAL CHEMISTRY BS, BS/MS  
MUSIC BA  
MUSIC PERFORMANCE MUS.B.  
MUSIC THEATRE BFA  
NEUROSCIENCE BS  
NUCLEAR MEDICINE TECHNOLOGY BS  
NURSING BS, BS ACCELERATED FORMAT, RN-BS  
OCCUPATIONAL SCIENCE/OCCUPATIONAL THERAPY BS/MS<sup>§</sup>  
PHARMACEUTICAL SCIENCES BS, BS/MS, BS/PHARM D  
PHARMACOLOGY AND TOXICOLOGY BS, BS/MS  
PHARMACY PHARM D\*\*  
PHILOSOPHY BA<sup>†</sup>  
PHYSICAL THERAPY DPT<sup>††</sup>  
PHYSICS BA  
    Teaching of Science Physics\*  
    Teaching of Science Physics and Chemistry\*

PHYSICS BS  
POLITICAL SCIENCE BA<sup>†</sup>  
    Advanced Political Science\*  
    American Politics and Public Affairs\*  
    Comparative Politics\*  
    General Political Science\*  
    International Politics\*  
    Public Law\*

PSYCHOLOGY BA, BS  
PUBLIC HEALTH BS, BS/MPH  
SOCIAL SCIENCES INTERDISCIPLINARY BA  
    Cognitive Science\*  
    Health and Human Services (Community Mental Health Early Childhood Studies, Social Gerontology)\*  
    International Studies\*  
    Legal Studies\*

SOCIOLOGY BA<sup>†</sup>  
SPANISH BA  
SPECIAL STUDIES BA, BS  
SPEECH AND HEARING SCIENCE BA  
STATISTICS BA  
THEATRE BA  
THEATRE BFA  
    Design/Technology\*  
    Performance\*

URBAN AND PUBLIC POLICY STUDIES BA



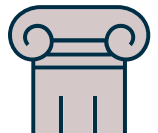
13 SCHOOLS AND COLLEGES, INCLUDING SUNY'S ONLY SCHOOLS OF ARCHITECTURE AND LAW



MORE THAN 200 FACULTY MEMBERS AWARDED THE SUNY CHANCELLOR'S AWARD FOR EXCELLENCE IN TEACHING



LIBRARIES AND SPECIAL COLLECTIONS WITH MORE THAN 3.8 MILLION VOLUMES



FOUNDED IN 1846

# Top Rankings



## Top 1% in the World

Ranked No. 268 out of 20,000 universities worldwide—CWUR



## Top 3% in the Nation

One of only 63 U.S. institutions in the Association of American Universities



## Top 25 in the Nation

Among the top 25 U.S. institutions hosting international students—IIE



## Top 35 in the Nation

Among the leading research universities in the U.S., spending \$400 million annually

# Campus Profile

21,607

UNDERGRADS

14:1

STUDENT-FACULTY RATIO

9,896

GRADS

101

COUNTRIES REPRESENTED ON CAMPUS

## WORLD-RENOUNDED FACULTY

Our faculty have won such prestigious awards as:

- Nobel Prize
- Pulitzer Prize
- National Book Award
- National Medal of Science
- National Medal of Technology
- MacArthur Foundation “genius award”
- Guggenheim



Learn from the **BEST TEACHERS** and top innovators in the world



Tuition that's a **FRACTION OF THE COST** of a comparable private university

# Life at UB



FOUR-SEASON CLIMATE

Buffalo named to The New York Times' famous “52 Places To Go” list



14 NCAA Division I teams

600+ organizations and clubs for academics, culture and sports

## EXCEPTIONAL VALUE

**Tuition: \$24,740\***

**Fees and Health Insurance: \$5,534**

**Food and Housing: \$15,363**

\*All figures represent fees for 2019–2020 and are subject to change.

### Scholarships:

- Awards typically range from \$1,000 to \$15,000.
- Submission of SAT/ACT scores is highly recommended.
- For best consideration, apply before Dec. 1.
- Last date for consideration is April 15.

## SUPERLATIVE FACILITIES

**50+** major research centers and institutes focusing on fields such as computational research; bioinformatics and life sciences; lasers, photonics and biophotonics; and geographic information and analysis.

**Multimedia** instructional spaces, wireless infrastructure, computational research facilities and laboratory spaces among the best in the nation.

**English Language Institute available.** Learn more: [buffalo.edu/eli](https://buffalo.edu/eli)



## An Inclusive, Welcoming Home

**8,000+** students live on campus, in both residence halls and apartment complexes

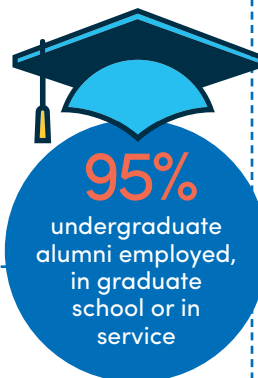


**13** Living Learning Communities

**13** residence halls

**35** dining locations on campus

Learn more: [buffalo.edu/campusliving](https://buffalo.edu/campusliving)



## IMPRESSIVE OUTCOMES

**268,000+ UB alumni in 150 countries and all 50 states**

UB grads hired by the most sought-after employers, including Amazon, Apple, Baidu, CannonDesign, Citi, CNN, Deloitte, Ernst & Young, Facebook, Google, HSBC, IBM, ICBC, Intel, KPMG, Microsoft, NASA, NBC Sports, Pepsi, Pfizer, PWC, Samsung, Tav Construction, Tata, Twitter and more.



## Apply Now

- UB International Application
- SUNY Application (Buffalo, University at)
- Common Application (SUNY University at Buffalo)
- Coalition Application

Learn more: [buffalo.edu/internationaladmissions/apply](https://buffalo.edu/internationaladmissions/apply)

## ACADEMIC CALENDAR

- Fall Semester: late August to mid-December
- Spring Semester: mid-January to early May

## APPLICATION DEADLINES

UB uses rolling admission. There is no specific application deadline; applications are accepted for review until all seats are filled.

## RECOMMENDED FILING DATES

- Fall Regular Admission: Feb. 1
- Fall Early Decision: Nov. 15
- Spring Admission: Oct. 1

## Admission Requirements

Admission is based on the applicant's academic records:

### 1 SCHOOL MARKS (GPA)

**Freshman:** B average, 3.0/4.0 GPA (or equivalent)

**Transfer:** C+ average, 2.5/4.0 GPA (or equivalent)

### 2 TEST SCORES (SAT/ACT)

**Freshman:** Required for direct admission to certain majors; otherwise optional

**Transfer:** Not required

Learn more: [buffalo.edu/internationaladmissions/tests](https://buffalo.edu/internationaladmissions/tests)

### 3 ENGLISH LANGUAGE PROFICIENCY\*

**TOEFL:** 79 iBT<sup>†</sup>

**IELTS:** 6.5<sup>†</sup>

**SAT:** 550 (ERWS)<sup>†</sup>

**ACT:** 20 (English and Reading)<sup>†</sup>

\* UB also accepts other English tests.

<sup>†</sup> Applicants with lower scores may be considered for admission.

Learn more: [buffalo.edu/internationaladmissions/englishfr](https://buffalo.edu/internationaladmissions/englishfr)

### 4 PERSONAL ESSAY

### 5 TEACHER RECOMMENDATIONS

For information about alternative exams, advanced placement, International Baccalaureate, GCE A-level exams and transfer credit, go to [taurus.buffalo.edu](https://taurus.buffalo.edu).